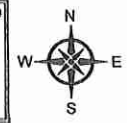


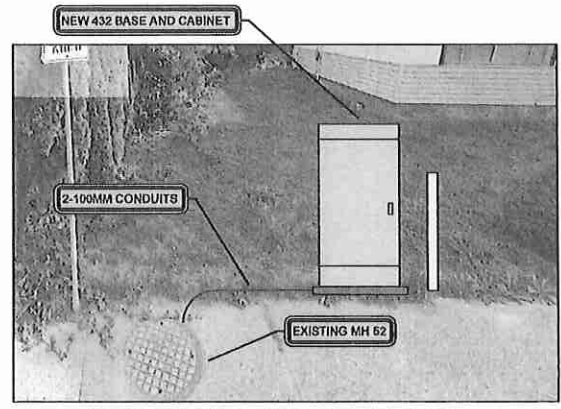
PLAN VIEW
HORIZONTAL SCALE: 1 : 250

RECEIVED AND PROCESSED
BY LAND DEVELOPMENT
INITIALS _____
APR 07 2017



NOTES:

500	INSTALL 432F FDH ON CONCRETE PAD WITH ONE BOLLARD, SEE DETAIL 'C' SHEET 600
501	STUB 2-100mm DUCTS 0.6m ABOVE FINISHED GRADE
502	INSTALL (2) 100mm DBII PVC CONDUIT L= 4.0 m. SEE DETAIL 'B' SHEET 600
503	CORE FOR 2-100mm CONDUIT IN TELUS MH-52 SEE DETAIL 'A' SHEET 600
504	NEW 90° BEND 2-100mm DBII PVC CONDUIT



45282 VEDDER MOUNTAIN RD
FDH - SITE PLAN
N.T.S.

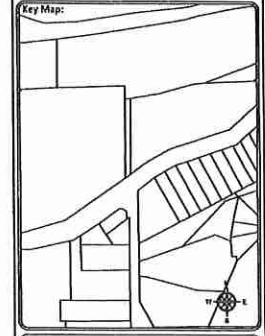
CAUTION:
GAS FACILITIES IN AREA
LOCATE AND EXPOSE
PRIOR TO COMMENCING WORK

METHOD OF PLACEMENT
VIA OPEN TRENCH UNLESS
OTHERWISE NOTED

LOCATE AND PROTECT ALL
OTHER UTILITIES IN FIELD

ALL MEASUREMENTS ARE IN
METERS UNLESS NOTED

Sheet Title:
Design
Function: Make ready Task: FDH Placement



DO ONE CALL
CALL BEFORE YOU DIG
1-800-495-4333
OR BY ONLINE ONE
STOP WORK BEFORE YOU
CALL AT 1-800-495-4333
OR VISIT WWW.ONECALL.CA

Client: TELUS

Prepared By: FAFL
SUITE 200 - 7485 130 ST
Surrey BC V3W 1H8

Rev	Date	Notes	QC
-	-	-	-
-	-	IFC: April 7 2017	-
-	-	-	-
-	-	IFP: MARCH 20TH 2017	-
DRAWN BY:		SHOJI YAGUSHITA	
DESIGNED BY:		RADTEC SYSTEMS	

Proprietary Information
Not for disclosure except under written agreement

Scale = 1:250
0 2.5 5.0 7.5 10.0

Project: Falcon 2017
SRDS 3191A - 2631466
Sardis, BC

File Name:
(DWG) SRDS 3191A - 2631466FDH
CUID Route
SRDS 3191A
Network Number 2631466 Sheet Number 600



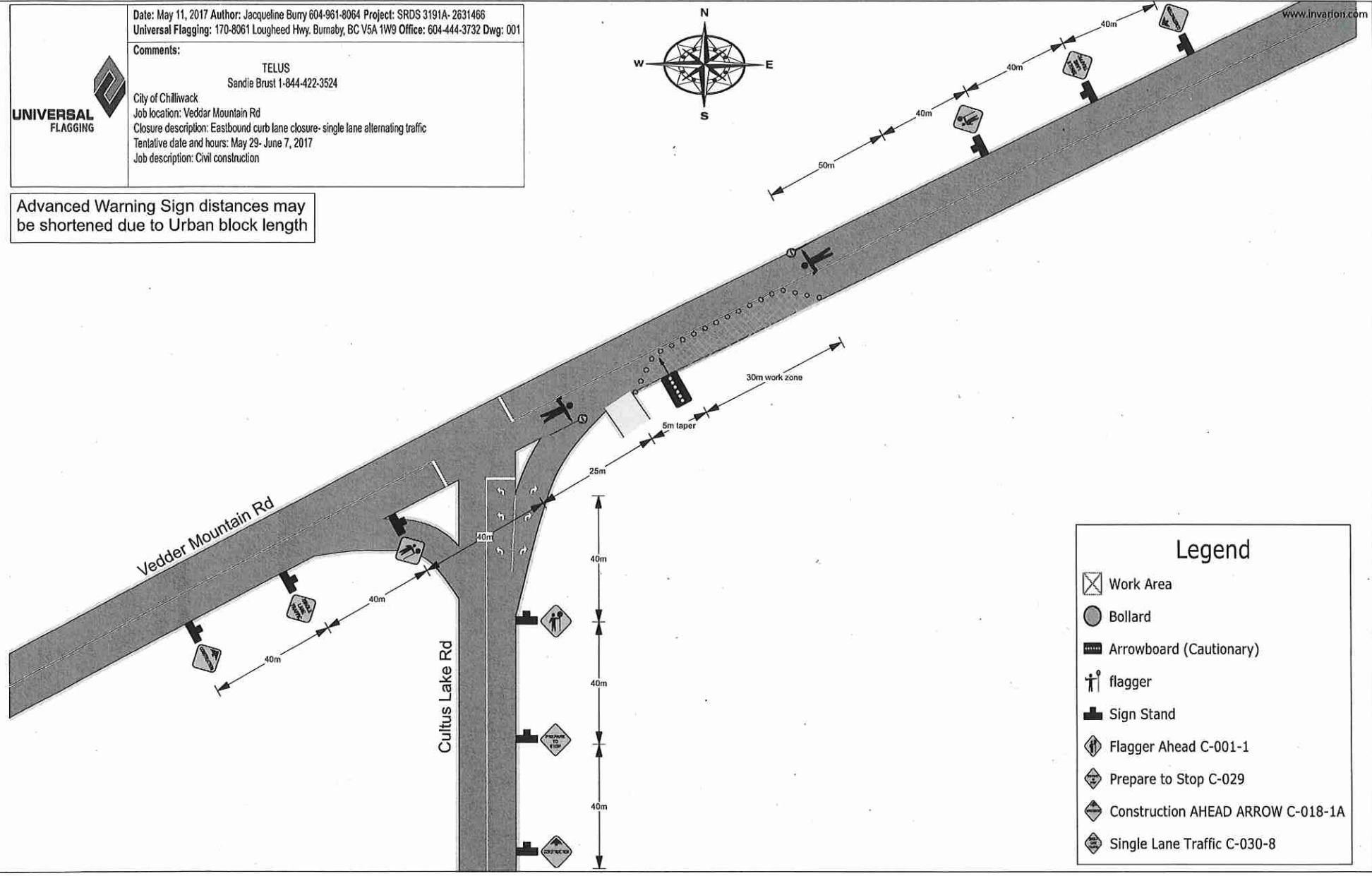
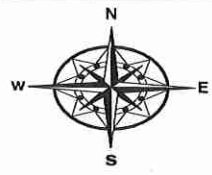
Date: May 11, 2017 Author: Jacqueline Bury 604-961-8064 Project: SRDS 3191A-2631466
Universal Flagging: 170-8061 Lougheed Hwy, Burnaby, BC V5A 1W9 Office: 604-444-3732 Dwg: 001

Comments:

TELUS
Sandie Brust 1-844-422-3524

City of Chilliwack
Job location: Veddar Mountain Rd
Closure description: Eastbound curb lane closure- single lane alternating traffic
Tentative date and hours: May 29- June 7, 2017
Job description: Civil construction

Advanced Warning Sign distances may be shortened due to Urban block length



Legend

- Work Area
- Bollard
- Arrowboard (Cautionary)
- flagger
- Sign Stand
- Flagger Ahead C-001-1
- Prepare to Stop C-029
- Construction AHEAD ARROW C-018-1A
- Single Lane Traffic C-030-8